



LIBERIA'S R-PACKAGE

WB REPORT

FCPF PARTICIPANTS COMMITTEE 24TH MEETING
LAO PDR, SEPTEMBER 25-29, 2017

NEETA HOODA, TASK TEAM LEADER, WORLD BANK



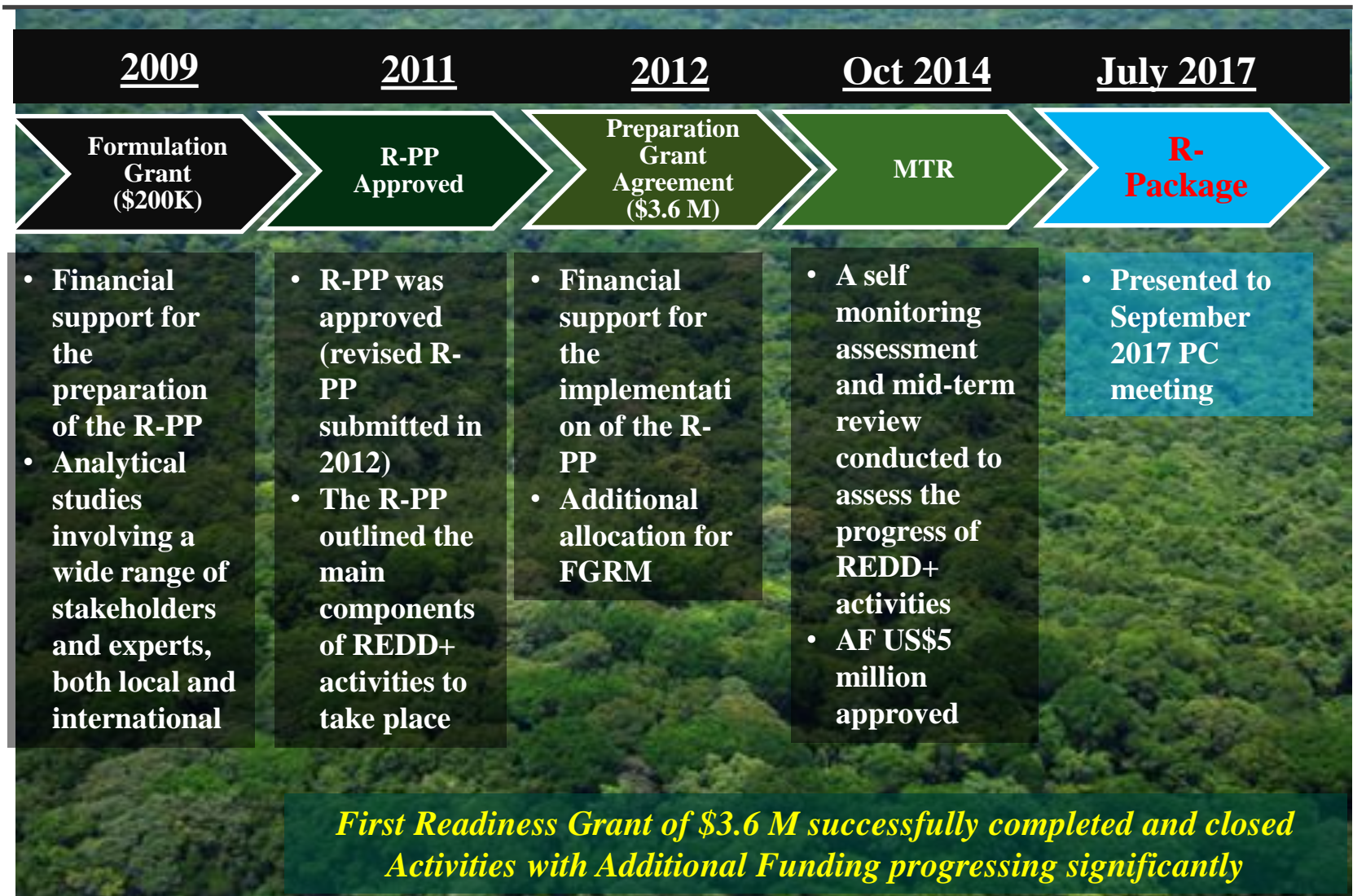
**FOREST
CARBON
PARTNERSHIP
FACILITY**

LIBERIA'S FOREST

- Liberia hosts one of the 34 global biodiversity hotspots
- Forests cover up to 4.3million ha, over 40% of Liberia's landmass, with two main forested areas lying in relatively flat territory in the south east of the country, and in the mountainous northern areas bordering Guinea and Sierra Leone



STEPS TOWARDS REDD+ READINESS



FCPF GRANT SUPPORT

The Project Development Objective:

to carry out a consultative and quantitative analysis of the different land use options for development of the national REDD+ Strategy for Liberia, to be approved by the National Climate Change Steering Committee

FCPF support Components	Total , \$ mln	Original grant, \$ mln	AF grant, \$ mln
1. Coordination of the REDD+ Readiness Process and Consultation	3.2	1.7	1.5
2. Contribute to the design of the national REDD+ strategy (including design of Emission Reduction Program)	2.4	0.8	1.6
3. Development of Reference Level or Reference Emissions Level	1.8	0.6	1.2
4. Project Management	1.2	0.5	0.7
TOTAL	8.6	3.6	5.0
DISBURSEMENT & Commitment		Fully disbursed and closed (Nov 2016)	2.4 million (disbursed and committed) On Track

COMPONENT 1: READINESS ORGANIZATION AND CONSULTATION

- **Status/Outputs:**
 - REDD Implementation Unit (RIU) is operational. RIU and REDD Technical Working Group are effectively managing the national co-ordination of REDD+ and implementation of activities planned under the readiness grant including procurement and financial aspects, and building national ownership of REDD+
 - National Climate Change Steering Committee reconstituted as apex body on REDD+ nationally
 - M&E Framework for REDD+ Readiness produced
 - Communication strategy produced and under implementation, through appropriate media and channels
 - FGRM development ongoing (setback due to consultant's non-performance and need to re-procure)
 - Resource mobilization efforts resulted in Norway commitment to support the sector (Letter of Intent signed in Sept. 2014).

COMPONENT 2: REDD+ STRATEGY PREPARATION

- Status/Outputs:
 - National REDD+ Strategy finalized and endorsed by the National Climate Change Steering Committee
 - SESA conducted through a highly participatory manner
 - Six SESA case studies (representing the range of environmental and social issues likely to arise from REDD+ Strategy implementation)
 - Jurisdictional ER program design

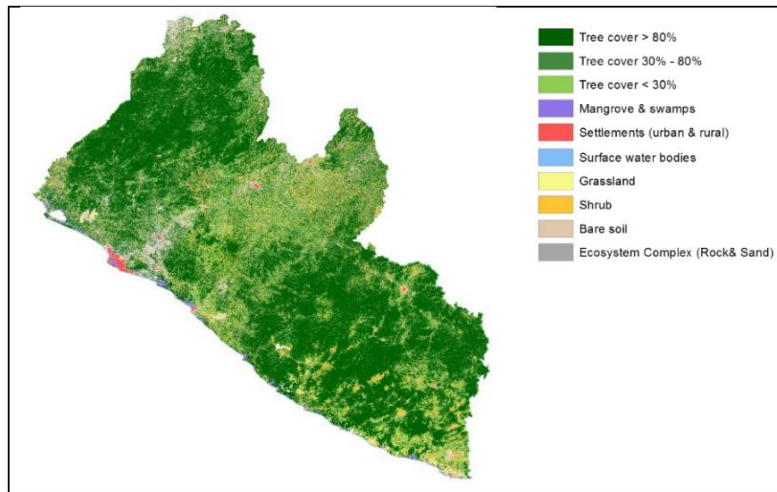
GOL also leveraging on opportunities to address issues relevant for REDD Strategy development :

- Analysis of governance in forest sector completed followed by Governance diagnostics using PROFOR governance tool
- GOL committed to Tropical Forest Alliance and working towards agricultural sustainable supply chains
- EU-FLEGT support on forest sector governance
- IDH support on sustainable palm oil / deforestation free supply chains

COMPONENT 3: REFERENCE EMISSION LEVEL / REFERENCE LEVEL

• Status/Outputs:

- Preliminary Reference Scenario produced
- Updated Reference Scenario commissioned
- National Forest Inventory commissioned
- Land and Forest cover map produced
- National forest definition determined, undergoing regional validation



COMPONENT 4: MONITORING SYSTEMS FOR FORESTS AND SAFEGUARDS



- Status/Outputs:
 - MRV design commissioned
 - Safeguards Information System design and operationalization – under procurement



KEY ACHIEVEMENTS AND CHALLENGES GOING FORWARD

Key Achievements:

- Liberia's progress with REDD+ Readiness is substantial
- A good readiness foundation is laid for the preparation of a sound jurisdictional ER Program in Liberia
- Mobilization of investment financing (Liberia Forest Sector Project) and commitment for ER payments (Norway)

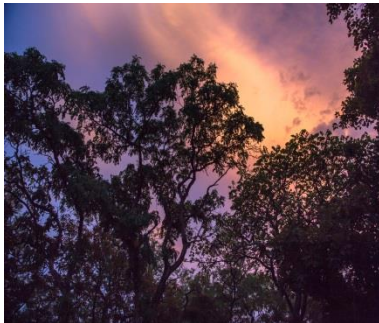


Key Challenges:

- Managing stakeholder expectations
- Effective community engagement in forest management, land tenure issues, and forest governance
- Skepticism of the private sector
- Delays and gaps due to Ebola outbreak
- Demonstration of results is important. This is a signal of success of strides made in REDD readiness
- Coordinated effort resulting in an ER Program

R-PACKAGE

- R-Package self-assessment inclusive, validated by stakeholders
- A voluntary effort to support future ER Program development
- Submission of R-Package is evidence of Liberia's commitment to REDD+
- World Bank supports Liberia's R-Package Self Assessment



Thank You!

